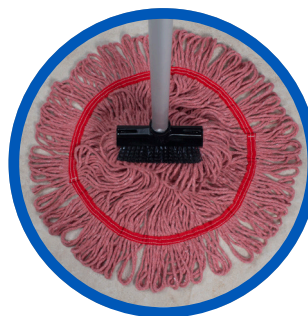




## Huskee™ Muscle Mop®

**Call your Inside Sales Representative, TODAY!**



### Looped-End Version Features Three Cleaning Surfaces for ...

- Increased Floor Coverage
- Reduced Labor Costs
- Push & Pull Action Reduces Operator Fatigue



In addition to including the high-impact head, fused with bristles, the looped-end Muscle Mop® is designed to provide three surfaces for cleaning. A sewn-in tailband improves coverage and reduces tangling. The yarn material is 100% recycled. Mop head features a universal threaded fitting.

Highly absorbent, cut-end mop, with high-impact, plastic head that is fused with scrubbing bristles. Non-woven yarn material requires no break-in period and holds 7x its weight in liquid. Excellent for scrubbing grouted tile floors!



Muscle Mops accept all threaded handles.

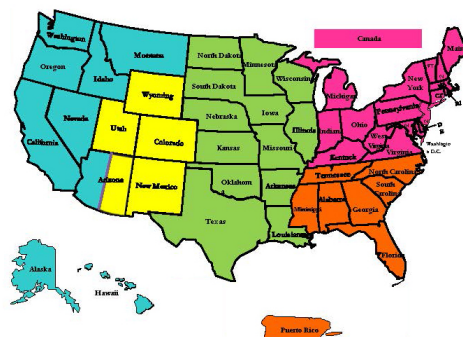
### Muscle Mops

Item #	Size	Description	Yarn Type	Yarn Color	Pack
A956103	Large	MusclePro HD; Cut-End	Non-Woven Yarn	White	12
A401001	Large	Huskee Muscle Mop	Blend	Blue	12
A401101	Large	Huskee Muscle Mop	Blend	Green	12
A401201	Large	Huskee Muscle Mop	Blend	Red	12

### Mop Handles

Item #	Size	Description	Material	Pack
M101060	15/16" x 60"	Threaded Wood Handle	All Wood Threads and Handle	12
M104060	15/16" x 60"	Metal Threaded Wood Handle	Metal Threads, Wood Handle	12
M120053	1" x 53"	Huskee Universal Handle	Plastic Collar, Aluminum Handle	12

### Inside Sales Team



- Rachel Morgan .....636.633.9313
- Bill Zobrist .....314.265.1214
- Kevin Warren.....618.581.6613



# Huskee™ Rapid Response Mopping System

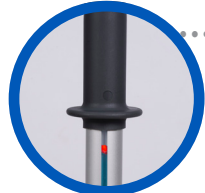
**Call your Inside Sales Representative, TODAY!**



..... **Fast-Action  
Dispense Trigger**

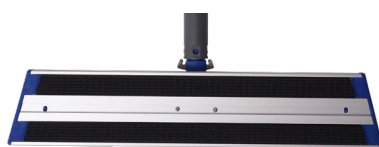


..... **Easy-Pour  
Chamber**



..... **Solution Level  
Indicator**

..... **Heat-Resistant  
Soft Grip Foam**



**Base Plate Bottom**

- Hook & Loop Attachment for Pads
- Sonic Welds Permanently Affix Strips

..... **Tri-Spray Dispenser**

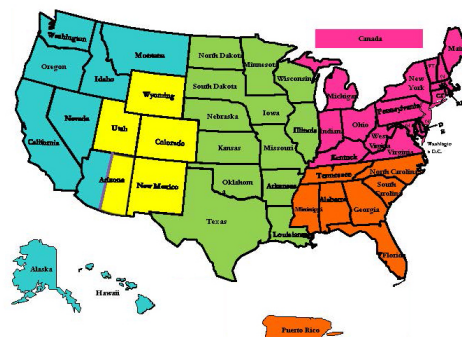
The Rapid Mop is a bucket-free system that delivers a controlled solution - providing a smear-free, faster drying floor.

The 15.2oz (450mL) reservoir holds water or cleaning solution that matches the pad absorbency volume, as a secondary indicator to change the pad.

16" frame accepts 18" Microfiber Flat Mop

<b>Item #:</b>	RRH-15
<b>Frame Size:</b>	16"
<b>Liquid Capacity:</b>	15.2 oz (450 ml)
<b>Use With:</b>	18" Microfiber Flat Mops
<b>Carton Quantity:</b>	1 Each / Carton
<b>Shipping Weight:</b>	2.30 lbs.
<b>Carton Cube:</b>	0.20 ft.

## Inside Sales Team



■ Rachel Morgan	.....636.633.9313
■ Bill Zobrist	.....314.265.1214
■ Kevin Warren	.....618.581.6613